



"Beauty has the power to heal hearts and souls..."

It is necessary that sacred buildings... are set forth, albeit in their simplicity, as oases of beauty, of peace, of welcoming, truly fostering an encounter with God and communion with one's brothers and sisters."

Pope Francis, December 6, 2016

Message to the 21st Joint session of Pontifical Academies

Please use the enclosed envelope to offer your gift.
THANK YOU!



SOCIAL CENTER AND KITCHEN

The Social Center is in need of updating—paint, windows, new blinds, and new lighting. Plans also call for a new entrance on the Northwest corner, closer to the planned new northside parking lot. THE KITCHEN is in desperate need of a complete renovation, including all NEW equipment and more storage. Plans call for the kitchen to be expanded into the current west side church entrance. The current doors there will serve as a kitchen service entrance.

NEW GATHERING SPACE; UPDATING PARISH OFFICES

Plans call for an expansion of the current main entrance. The present chapel will be removed and Fr. Ed's office will also be removed, creating a much larger main entrance or "gathering space." The main doors from the outside will be re-oriented to the east, directly facing Eaton Street with a "plaza area" in front. ALL entrances will be handicapped accessible. ALL THE OFFICES and meeting areas will be updated (paint, lighting, etc.). The main parish administrative office will be reconfigured, to provide for the pastor's office on south end of the main office.



Blessed Trinity Catholic Community

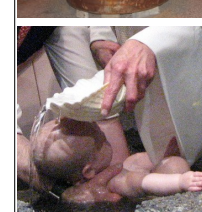
1475 Eaton Street, Missoula, MT 59801

www.blessedtrinitymissoula.org

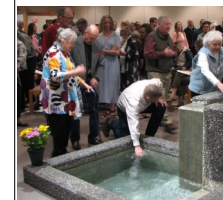
A VISION of Hope



A PROMISE of Life



A SPIRIT of Service



Blessed Trinity Catholic Community
Capital Campaign 2026

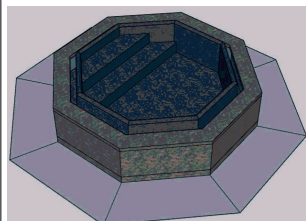
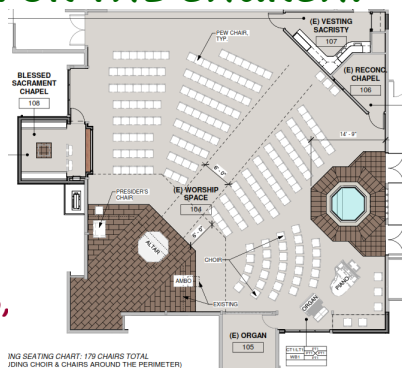
***"Fostering an encounter with God
and communion with
our sisters and brothers..."***

RESTORATION, MAINTENANCE, and CARE



of Blessed Trinity's "HOUSE FOR THE CHURCH."

- + Re-sealing walls;
- + Painting;
- + Staining beams;
- + Carpeting;
- + New Seating;
- + Tile around altar, ambo, and font.
- + Updating/ replacing large West and South windows.



The FONT...

Part of the current construction project, but finishing will be funded through this new campaign. The font will be eight sided,

representing the traditional "eighth day of creation," the new age of Christ. The interior and top will be black granite, with an "infinity edge." The water will flow silently and will be visible from all areas of the worship space. Carved into the black granite at the bottom of the font will be the ancient Celtic symbol of the Blessed Trinity.



The ALTAR-THE LORD'S TABLE.



**"Holy God, here is prepared
the Table of the Lord,
where your children,
fed by the Body and Blood
of Christ, are gathered
into one holy Church."**

Rite of Dedication of an Altar

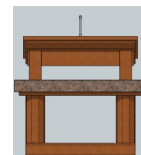
The Sacred Altar, the Lord's Table, is the center of every Catholic Church. We gather around this holy table and with the whole world offer the Great Prayer of Thanksgiving. At Christ's Sacred Altar we receive and become the Body and Blood of the Risen Lord! The Altar Table must be strong, true, and beautiful. Our new Altar will be crafted from solid wood. The top of the altar will be dark granite, eight sided, relating it to the font, drawing us into the new age of Christ. Inserted into the bottom of the altar will be a relic of Saint Pope John XXIII, to whom our worship space is dedicated.



***"Beauty has the power
to heal hearts and souls..."***

The "Table" of God's Word.

THE "AMBO" represents the dignity and uniqueness of the Word of God and of reflection upon that word. It is central to Catholic worship and must reflect a close connection to the Altar/Table. Our new ambo is designed from that perspective. It will be constructed from the same wood as the altar. The "reading table" will be set on dark granite, as on the altar top and at the font.



This new ambo will also be handicapped accessible. The upper portion will be able to be automatically lowered to accommodate persons with a wheel chair, or those of a shorter stature.

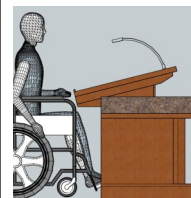


IMAGE OF MARY, Mother of the Lord

We have not yet secured an artist to assist us with the design and fabrication of this sacred image. We have determined that the location will be at the current space of the west side entrance. That area will be closed and a small area will be constructed there for the Marian shrine. Prior to that, however, the new gathering space and front entrance will need to be constructed, as well as social hall updating and a new Northwest entrance to the social center.



***"Humans need beauty,
our senses long for beauty."***