

---

# BLESSED TRINITY CAPITAL CAMPAIGN

---



## *Dear People of Blessed Trinity,*

*The road has been long, the needs have been determined and the vision has been discerned.*

*We have taken our time, considered the potential and have been enthusiastic in our determination to build on what has been given to us, to affirm the gifts of those still among us who have built this holy place and to move forward now to honor this house for the church with loving care, attention to the holiness of the Gospel and the beauty of our living faith.*

*As we move forward we will HONOR THE PAST, SERVE THE PRESENT and PROVIDE FOR THE FUTURE.*

*WE WILL DO THIS because we are a people of faith whose worship is true, whose song is strong and whose caring service is real.*

*WE WILL DO THIS because we are filled with hope and we are not afraid to “love and serve the Lord.”*

*WE WILL DO THIS because the many must be welcomed into a house filled with the beauty of God’s love, the heart of hospitality and the wonder of a genuine and believing people.*

*WE WILL DO THIS because we care, because we are here and because in some fashion each of us and all of us have heard and are hearing the loving and hope-filled invitation of God as we gather at the Holy Table with the Blessed Trinity—Father, Son and Holy Spirit.*

*WE WILL DO THIS because this house must be a welcoming place, a place of awe and mystery, beauty and wonder, reverence and thanksgiving—a house for the worship of God and the loving care of the living, hopeful and struggling Body of Christ.*

*WE WILL DO THIS because this house must itself proclaim the Gospel of Christ and be a beacon of hope and promise of mercy to neighbors close and far away.*

*WE WILL DO THIS because we feel, see and hear Christ among us and in the many all around us.*

*WE WILL DO THIS BECAUSE WE MUST MAKE READY UNTIL HE RETURNS IN GLORY!*

*May the peace and hope of Christ, with whom we will journey through the Lenten days of prayer, fasting and almsgiving, be with each of you.*

*Sincerely,*



*Fr. Ed Hislop, Pastor*





*The Lord stirred up the people  
so they set to work on his house.*

Haggai 1:14





# Prayer for Capital Campaign



“TREE OF LIFE, AWESOME MYSTERY seed that dies to rise in history, may we see ourselves in you.” Loving Father, “Gentle Jesus, mighty Spirit, Come enflame our hearts anew.”

You have chosen us to be here in this community of the Blessed Trinity; stir into flame your gift that what we have received we may take, bless, break and give.

“TREE OF LIFE, AWESOME MYSTERY,” teach us to HONOR THE PAST, with blessed memory, as the roots of our beginnings were planted with hopeful trust, living sacrifice and the strength of vision.

“Help us remember truth once spoken, with love passed on through act and word.”

“TREE OF LIFE, AWESOME MYSTERY,” strengthen us to SERVE THE PRESENT with loving hands and an open heart. Let us hold and be held by one another, from generation to generation, so that we may hear the cry of the poor and the longing of “every person lost and broken;” let us embrace the vision of youth and the innocence of children; the hope of families and the dreams of the forgotten.

“TREE OF LIFE, AWESOME MYSTERY,” “come inflame our hearts anew,” inspire us with wisdom to PROVIDE FOR THE FUTURE: make us a new creation with eyes to see clearly and “hearts to live more nearly” the new life of the Gospel. “Hold us close through each tomorrow, love as near as every breath.” Stir into flame the Spirit you have given; a Spirit that makes us “strong, loving and wise.”

“TREE OF LIFE, AWESOME MYSTERY seed that dies to rise in history, may we see ourselves in you.”

Hear us and be with us, Father, Son and Holy Spirit:  
Blessed Trinity forever and ever. AMEN.

*Based on Tree of Life, Awesome Mystery, Marty Haugen; 2 Timothy 1:6*





# *Getting Involved in the Project*

## *Planning Sub-Committees during the Capital Campaign*

Parishioners will be provided the opportunity to serve on various specific teams to provide input for the Strategic Planning Team as decisions are made regarding specific aspects of the project. These teams will include the following:

*Worship Space – Font, Image of Mary, Furnishings*

*Art*

*Music Area– Piano, Organ, Choir*

*Kitchen and Bathrooms*

*Accessibility*

*Gathering Space*

*History of Parish*

*Landscaping and Outside Environment*

Details regarding these and other sub-committees will be provided.

The righteous thrive like a palm tree and grow like a  
cedar tree in Lebanon.

Planted in the house of the Lord,  
they thrive in the courts of our God.

They will still bear fruit in old age,  
healthy and green, to declare:

"The Lord is just;

He is my rock,

and there is no unrighteousness in Him."

Psalms 92:12-15



---

# CAPITAL CAMPAIGN CHALLENGE

GOAL \$500,000

---

## HOW DID WE DETERMINE THE CAMPAIGN GOAL?

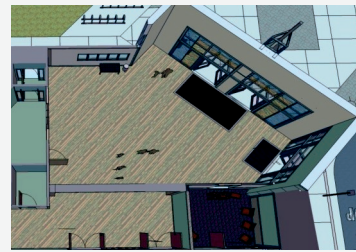
Planning began with an architectural design that cost much more than the parish or the Diocesan consultants felt we could realistically raise in a capital campaign. Following our full parish gatherings and the consensus that emerged, the plan was scaled back to a more reasonable cost. This very basic cost of **\$469,635.00** emerged based on the “sense” of our seven full parish gatherings. We have rounded the number up to **\$500,000**. That “sense” was confirmed by the Strategic Planning Team, Pastoral and Finance Councils and the Pastoral Staff. This amount is the *basic construction cost* of the project; it does not include costs for furnishings, image of Mary, or the new baptismal font. Another goal of the capital campaign is to replenish our parish savings account for expenses (\$152,000) related to required building maintenance which could not be delayed (heating and air conditioning, exterior painting, rain gutter replacement and parking lot re-surfacing).

Those who participated in the full parish gatherings recommended that the “project” be developed in **Three Phases** over a period of time.



### PHASE ONE: WORSHIP SPACE

SANCTUARY UPDATES  
ACCESSIBILITY  
LITURGICAL FURNISHINGS  
IMAGE OF MARY  
WORSHIP SPACE LIGHTING  
BAPTISMAL FONT  
NEW SOUND SYSTEM WITH HEARING ASSIST  
SACRISTY UPDATE  
RECONCILIATION CHAPEL UPDATE  
REFURBISHED ORGAN



### PHASE TWO: GATHERING SPACE

NEW FRONT ENTRY– GATHERING SPACE  
ACCESSIBILITY; OFFICE UPDATING  
BLESSED SACRAMENT CHAPEL  
RESTROOMS



### SALE OF LAND

Proceeds from the sale of Blessed Trinity land could be utilized to replenish the parish savings account for the land appraisal cost and fees paid for the re-zoning and boundary change process; and enable us to move forward with portions of the Project before the goal of the capital campaign is realized, and to fund aspects of the project.



### PHASE THREE: ENTRY

STREET ENTRANCE, PARKING  
SOCIAL CENTER KITCHEN  
LIGHTING–SOCIAL CENTER AND OFFICES  
LANDSCAPING AND OUTDOOR UPDATES



# MAKING YOUR DECISION

## Weekly Giving

Weekly Gift	Annual	3-Year Pledge
\$10	\$520	\$1560
\$20	\$1040	\$3120
\$25	\$1300	\$3900
\$40	\$2080	\$6240
\$50	\$2600	\$7800
\$75	\$3900	\$11,700
\$100	\$5200	\$15,600
\$250	\$13,000	\$39,000
\$500	\$26,000	\$78,000

## Monthly Giving

Monthly Gift	Annual	3-Year Pledge
\$40	\$480	\$1440
\$80	\$960	\$2880
\$100	\$1200	\$3600
\$160	\$1920	\$5760
\$200	\$2400	\$7200
\$300	\$3600	\$10,800
\$400	\$4800	\$14,400
\$1000	\$12,000	\$36,000
\$2000	\$24,000	\$72,000

*Intention card will be mailed to all parishioners the week of March 2, 2020.*

*THE OPPORTUNITY TO STATE YOUR INTENTION OF SUPPORT will be provided during Mass on March 7/8 & 14/15 & 21/22 & 28/29.*

*Payment of intention can begin on Palm Sunday, April 4/5.*

*Special envelopes are provided in regular stewardship packet. Auto debit payment can also be arranged.*

*The gift to the capital campaign is in addition to your regular weekly or monthly stewardship offering. Thank you.*



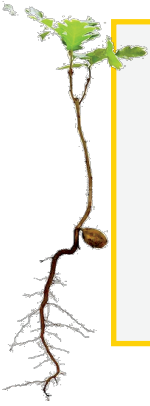
**TAXES—** ALL PLEDGE PAYMENTS ARE TAX DEDUCTIBLE

## GIFTS OF APPRECIATED PROPERTY

—DONATING APPRECIATED STOCK OR PROPERTY IS A GREAT WAY TO GIVE



# Blessed Trinity Capital Campaign



“TREE OF LIFE, AWESOME MYSTERY SEED THAT DIES TO RISE IN HISTORY,  
MAY WE SEE OURSELVES IN YOU.” LOVING FATHER, “GENTLE JESUS, MIGHTY SPIRIT,  
COME ENFLAME OUR HEARTS ANEW.” ‘

YOU HAVE CHOSEN US TO BE HERE IN THIS COMMUNITY OF THE BLESSED TRINITY;  
STIR INTO FLAME YOUR GIFT THAT WHAT WE HAVE RECEIVED  
WE MAY TAKE, BLESS, BREAK AND GIVE.”

## *Shaping a House for the Church*

Each time we gather, we risk inviting our God into a deeper relationship with us.

Each Sunday we bring to our gathering our hopes, challenges, dreams and gifts as they have been lived in our daily lives. We bring ourselves to the Eucharistic gathering that the bread of our lives will be blessed, broken and shared so that we may be transformed for continued service.

“In the experience of building or renovating its place of worship, a faith community engages in a conversation that can not only shape a space for liturgy but also renew the faith life of the local Church....This dialogue...can challenge the parish to reflect on and to restate its self-understanding as Church, its desire for a vibrant liturgical practice, its appreciation for good artistic expression, and its commitment to a Gospel-based mission.” (Introduction to *Built of Living Stones: Art, Architecture and Worship.*, National Conference of Catholic Bishops)

Our conversation has already included how we will attend to present physical needs of our worship space. We have developed a plan and design, and the details will continue to emerge as we move forward. The experience of renovation will become a transformative experience for the parish as we share our faith journey and our hopes and dreams for the future of our parish.

Together, we will focus on our prayer together as we design an altar for Blessed Trinity; we will renew our commitment to new members as we imagine the design and placement of our baptismal font; we will hear again the songs of our faith as we prepare the music area and make space for our pipe organ and piano; we will recall our spirit of hospitality as we plan for an enlarged gathering area; and we will reflect on our history of care for the poor and vulnerable of our community of Missoula as we refresh all the other areas of our communal space.

Our renewed church building will be a further sign of the dignity with which we worship and respect each person who gathers with us, making room for all and inviting our neighborhood to share in our good works. The finished place which we will come to know as the “house” for the people of Blessed Trinity Catholic Community will express that we believe our loving God is present, here, in our neighborhood for all to see.



# Honor the Past



“TREE OF LIFE, AWESOME MYSTERY,” TEACH US TO  
**HONOR THE PAST**, WITH BLESSED MEMORY,  
AS THE ROOTS OF OUR BEGINNINGS WERE PLANTED  
WITH HOPEFUL TRUST, LIVING SACRIFICE AND THE STRENGTH OF VISION.  
“HELP US REMEMBER TRUTH ONCE SPOKEN,  
WITH LOVE PASSED ON THROUGH ACT AND WORD.”

## *We Honor Our Roots*

We thank those faith-filled women and men who sacrificed so to build and maintain the Houses of God in which we grew in our own faith. The churches of our childhood, young adulthood, middle and old age. We are especially grateful to the founding members of Holy Family Parish and Pope John XXIII Parish of Missoula for creating a community in which we feel at home with Christ.

- ◆ The celebration of Mass, the celebration of all the Sacraments, the revelation of the Word, the caring for the sick and homebound, the comfort for the poor and homeless, all the acts of ministry.
- ◆ The hammering of the nails, the laying of floors, the painting of walls, the mowing of the lawns and shoveling snow, the cleaning of the hall, all the acts of building and maintaining a structure.
- ◆ The generosity of the weekly and special collections, the bake sales, the harvest dinners, the fish fries, the raffles, all the acts of financing the ministry and the facility.
- ◆ The gift of table, love, friendship, comfort, laughter, tears, joy, fun and games, conversation, generations, all the acts of family.

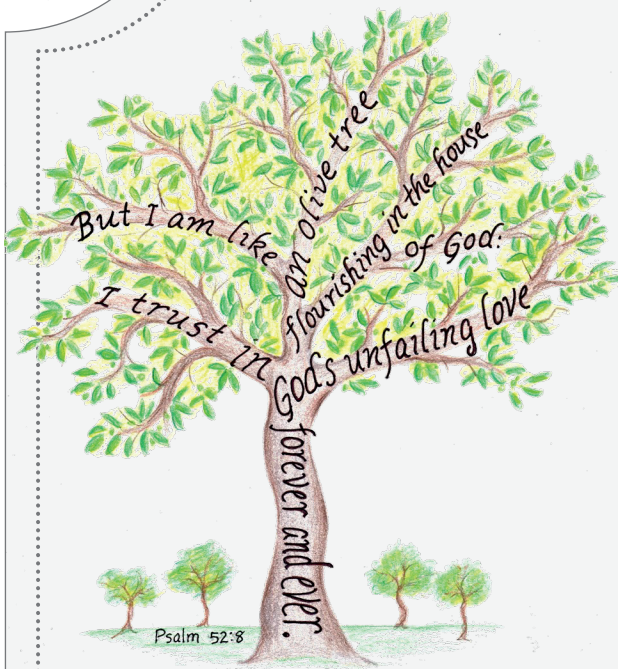
Let your **roots** go down into Christ, and let your lives be built on Him.  
Then your faith will grow strong in the truth you were taught,  
and you will overflow with thankfulness.

Colossians 2:7

# Serve the Present

"TREE OF LIFE, AWESOME MYSTERY," STRENGTHEN US TO **SERVE THE PRESENT** WITH LOVING HANDS AND AN OPEN HEART. LET US HOLD AND BE HELD BY ONE ANOTHER, FROM GENERATION TO GENERATION, SO THAT WE MAY HEAR THE CRY OF THE POOR AND THE LONGING OF "EVERY PERSON LOST AND BROKEN;" LET US EMBRACE THE VISION OF YOUTH AND THE INNOCENCE OF CHILDREN; THE HOPE OF FAMILIES AND THE DREAMS OF THE FORGOTTEN."

## *The Trunk that Nourishes the Fruit*



The trunk of a tree delivers the nourishment to the branches, the flower, and the fruit. Our support to the parish, too, delivers life and transforms each of us. Each piece of the renovation assists in our mission.

**The Entry**— Brings Welcome to the Body of Christ and sends us forth to love and serve

**The Improved Access**— Brings Justice and Dignity into the World because We Recognize the gifts that all peoples with differing abilities Bring to the Community

**The Environment**— Brings Beauty into the World as We Appreciate and Support Artisans and Come to Know God through Art

**The Font**— A Place of New Birth; Flowing Waters; Spring of Life; River of Glory

**The Altar**— Table of joy; Sign of Christ; Place of Communion; Center of Praise and Thanksgiving

**The Organ**— Music, Ever Ancient yet Ever New; Many Pipes, One Song Rising Worthily to God

**Lighting**— Brings Light into the World Since We See the Word of God

**Acoustics**— Brings the Word of God and Prayer into the World since We Hear the Word of God Proclaimed

**Heating and Air Conditioning**— Brings Warmth and Comfort into the World for when We are Healthy We Can Better Care for Others



# Provide for the Future

"TREE OF LIFE, AWESOME MYSTERY," "COME INFLAME OUR HEARTS ANEW,"  
INSPIRE US WITH WISDOM TO **PROVIDE FOR THE FUTURE**:  
MAKE US A NEW CREATION WITH EYES TO SEE CLEARLY  
AND "HEARTS TO LIVE MORE NEARLY" THE NEW LIFE OF THE GOSPEL.  
"HOLD US CLOSE THROUGH EACH TOMORROW,  
LOVE AS NEAR AS EVERY BREATH." STIR INTO FLAME THE SPIRIT  
YOU HAVE GIVEN; A SPIRIT THAT MAKES US "STRONG, LOVING AND WISE."

## *The Fruit that Provides the Seed*

Just as the generations before us built on the foundations given them, so do we. We provide for the future, trusting the Holy Spirit to increase our investment tenfold. Please prayerfully discern your gift to the capital campaign knowing that the gift we give today will provide for generations to come.



Blessed Trinity Capital Campaign Team: *Gary Weisbrich (chair), Pat Wegner, Hans Zuuring, Carolina Bridges, Louise Yamasaki, Jim McDonald, Daniel Hampson, S. Mary Jo Quinn, Fr. Ed Hislop.*

Strategic Planning Team: *Joe Licitra (chair), David Neu, Rita O'Neil, Betty Chrestenson, Ruth Licitra, Joan Dodge, Barb Dryden, Marge Nordin, Dale Barnum, Jim McDonald, Caroline Pickolick, Pat Wegner, S. Mary Jo Quinn, Fr. Ed Hislop*

WE WILL DO THIS because this house must be a welcoming place, a place of awe and mystery, beauty and wonder, reverence and thanksgiving—a house for the worship of God and the loving care of the living, hopeful and struggling Body of Christ.

WE WILL DO THIS because this house must itself proclaim the Gospel of Christ and be a beacon of hope and promise of mercy to neighbors close and far away.

WE WILL DO THIS because we feel, see and hear Christ among us and in the many all around us.

WE WILL DO THIS BECAUSE WE MUST MAKE READY UNTIL HE RETURNS IN GLORY!



*For further information and to view the slide presentations provided at the seven full parish gatherings go to: **[blessedtrinitymissoula.org](http://blessedtrinitymissoula.org)***