

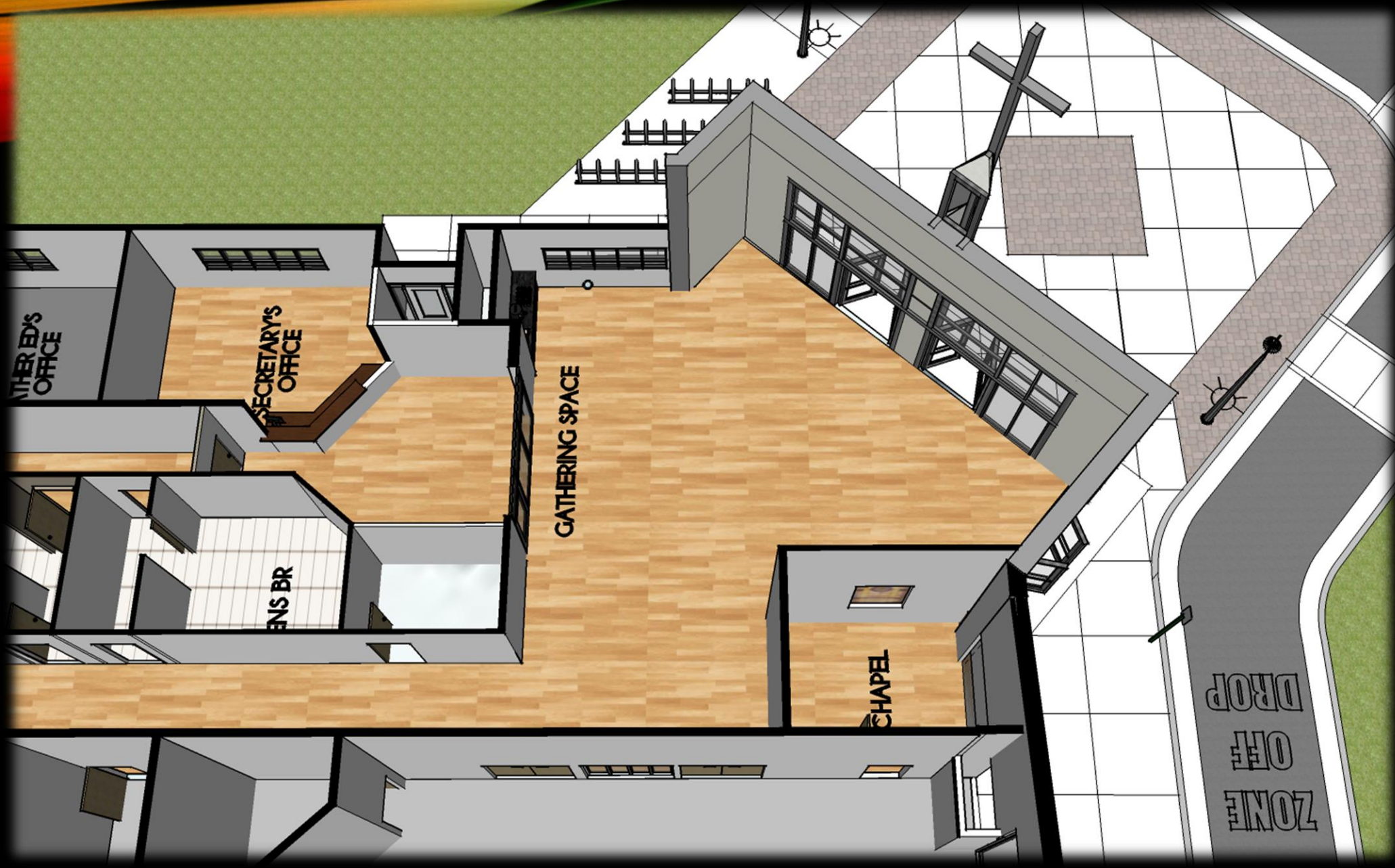


A house for the Church...

Entering ~ Gathering ~ Doing



**Main entry from the South side of the current building.
The doors are approximately where the current entrance is located.**







The “narthex” is a place of welcome—a threshold space between the assembly’s space and the outside environment.

...it serves as a gathering space and as the place of entrance and departure. This space helps believers to make the transition from everyday life to the celebration of the liturgy, it helps those sent forth for mission to live out the mystery that has been celebrated.

It is the place of entrance to every aspect of parish life. Through this space every aspect of parish life is entered: **Worship, prayer, pastoral offices and ministries and social center.**

Built of Living Stones #95 adapted

This should be the primary and only entry into the life and ministry of the Parish community. It is a place of hospitality, beauty and warmth. A place to converse and bid farewell.



A threshold
between the
Assembly
Space and the
outside
environment...



Go in peace to love and serve the Lord.



Blessed Sacrament Chapel



The place of reservation should be a space that is dedicated to Christ present in the Eucharist and that is designed so that the attention of one praying there is drawn to the tabernacle that houses the presence of the Lord. Iconography can be chosen from the rich treasury of symbolism that is associated with the Eucharist.

Built of Living Stones #73





Total Estimated Cost of that design

\$1,053,315

This does NOT include Art, Image of Mary, Furnishings, etc.



\$0



Back to the drawing board...!

STRATEGIC PLANNING TEAM PRIORITIES, BASED ON FULL PARISH DISCUSSIONS:

- +New entry and gathering space is highly valued.
- +Worship space updating/renovation. Organ placement.
- +Worship space lighting. Sound system.
- +Worship space art – altar, ambo, image of Mary, etc.
- +Accessibility in all areas.
- +Change in entrance to worship space is not a priority.

PHASE PROJECT:

PHASE 1. Worship space.

PHASE 2. Gathering Space; Blessed Sacrament Chapel; restrooms.

PHASE 3. Street entrance; parking, landscaping;
Kitchen; Lighting in Social Center and Offices.

**Total ESTIMATED
cost of the three
REVISED phases is
\$469,635 - \$569,000**

**This does not include Art or furnishings
It also does not include Kitchen renovations
nor complete estimate for lighting.**

Estimate from Shane Kesterke Contracting

DESCRIPTION	QUANTITY	RATE	TOTAL
Building permit	1	4000	\$ 4,000.00
Excavation & site work, including parking lot	175000	1	\$ 175,000.00
Entry demo	12000	1	\$ 12,000.00
Concrete foundation for new entry	18000	1	\$ 18,000.00
New entry wall framing	1300	7	\$ 9,100.00
New entry roof framing & membrane	600	50	\$ 30,000.00
Interior demo & wall framing	7500	1	\$ 7,500.00
New glass, doors & windows	28000	1	\$ 28,000.00
Electrical & lighting	15000	1	\$ 15,000.00
Plumbing & mechanical, assumes ductwork only, no new units	12000		\$ 12,000.00
Siding & paint	1200	8	\$ 9,600.00
Insulation	3500	1	\$ 3,500.00
Drywall	10000	1	\$ 10,000.00
Painting - interior	10000	1	\$ 10,000.00
Interior doors, hardware, and trim	3	1400	\$ 4,200.00
Flooring - tile & carpet combo or comparable	1200	20	\$ 24,000.00
Interior trim work	7000	1	\$ 7,000.00
Landscaping	30000	1	\$ 30,000.00
Contingencies	404900	0.15	\$ 60,735.00
		TOTAL	\$ 469,635.00

Lighting estimates

DC Engineering July 19, 2018

Phase 1: Worship Space

Fixtures: \$47,300

Labor: \$12,750

TOTAL: \$60,050

**Total LIGHTING
cost estimate:
\$112,350.**

Phase 2: Gathering Space

Fixtures: \$ 4,700

Labor: \$ 3,700

TOTAL \$ 8,400

Phase 3: Lighting estimates for offices/social center

Fixtures: \$28,000

Labor: \$15,900

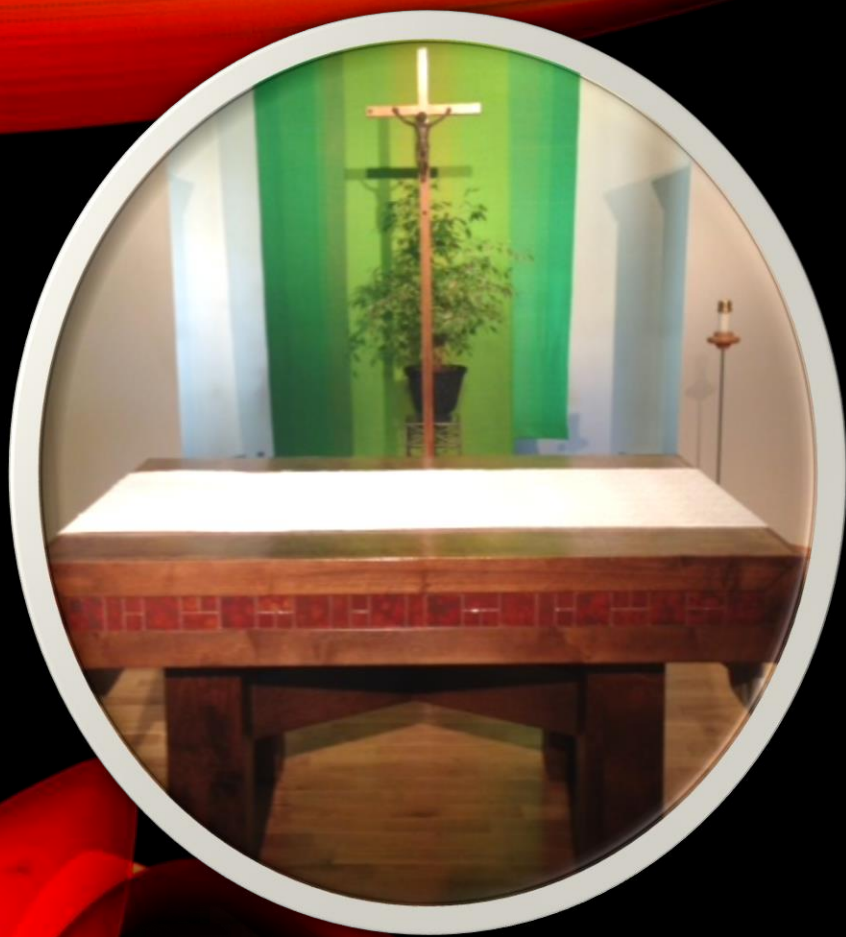
TOTAL \$43,900



PHASE ONE

Worship Space

A revised design...



Lord, send your Spirit from heaven to make this church an ever-holy place, and this altar a ready table for the sacrifice of Christ.

Here may the waters of baptism overwhelm the shame of sin; here may your people die to sin and live again through grace as your children.

Here may your children, gathered around your altar, celebrate the memorial of the Paschal Lamb and be fed at the table of Christ's word and Christ's body.

Here may prayer, the Church's banquet, resound through heaven and earth as a plea for the world's salvation.

Here, may the poor find justice, the victims of oppression, true freedom.

From here may the whole world clothed in the dignity of the children of God, enter with gladness your city of peace.

























FINANCING

“From his fullness we have all received, grace upon grace.”

The Gospel of John 1:16

CAPITAL CAMPAIGN

Three – five year commitment

The GENERAL Principle for Catholic Parish Capital Campaigns:

**A parish can expect to raise between 2 - 4 times the annual giving amount
OR for Blessed Trinity \$400,000 - \$800,000**

(Annual Stewardship giving: \$209,000; or including all stewardship collections: \$235,000)

OTHER FINANCIAL RESOURCES TO HELP FUND PROJECT...

There is currently an interest in the land
Blessed Trinity owns on the West side of the property.

This is of significant value.

The Pastoral Council, Finance Council, Strategic Planning Team
and Pastoral Staff desires to pursue this interest.

DIOCESE OF HELENA SUPPORTS THE POSSIBILITY.

TABLE TALK...

**EACH TABLE REACHES A CONSENSUS ON EACH OF THESE
STATEMENTS AND REPORTS BACK TO WHOLE GROUP**

❖ **CLARIFICATIONS.**

**Is there a particular aspect,
concern, need or idea from your
table that you wish to bring to the
whole group?**



EACH TABLE REACHES A CONSENSUS ON EACH OF THESE STATEMENTS AND REPORTS BACK TO WHOLE GROUP



- ❖ How do you see this renovation as a benefit to our life as a welcoming, worshipping community of faith?
- ❖ What excites you about this plan? How will it enhance our faith community? How does it express our Catholic identity?
- ❖ What is your table's overall sense of the revised plan as presented?
- ❖ Do the financial requirements for this plan feel reasonable and realistic?
- ❖ How does your table envision financially supporting this plan?

How do YOU envision
supporting this plan?



THE LORD IS MY LIGHT

Refrain



The Lord is my light, the Lord is my help, the Lord is my sal - va - tion.

The image shows a musical score for the refrain of the hymn 'The Lord is my Light'. It consists of two staves of music in treble clef. The first staff contains the melody for the first line of the refrain, and the second staff contains the melody for the second line. The lyrics are written below the notes. The background of the image features abstract, flowing shapes in shades of red, orange, and blue.

Text based on Ps 27. Text and music © 1996, Christopher Walker. Published by OCP. All rights reserved. Used with permission, One License A-704371.

NEXT STEPS....

- +Collate input received from today's gathering;
- +Continue work with our architect, Carl Posowitz, to refine design.
- +Continue process for design, placement and improvement of the organ.
- +Begin planning for Capital Campaign-
Develop "Case Presentation."
- +Continue to pursue land-sale possibility/
potential.
- +Connect with Ken Griesemer, to begin process
for Furniture Designs, etc.
*(Altar, Ambo; candles; presider chair/
assembly seating; image of Mary
and other art possibilities)*



**“...the true ‘apology’
for the Christian faith,
the most convincing demonstration
of its truth, are the saints
and the beauty that faith has generated.**

**Humans need beauty,
our senses long for beauty.**

**Beauty can be a vehicle for holiness
and the arts within liturgy
express the beauty that evokes
or leads to holiness
through signs, symbols and music....”**

Pope Benedict XVI

