

POSSIBILITY FOR MAIN ENTRANCE



Newly designed possibility for the Main Entry to Blessed Trinity.

This is the view entering from current Eaton Street entry.

PROPOSED SOUTH SIDE MAIN ENTRANCE



**Newly designed possibility for Main Entry from the South Side of the current building.
The doors are approximately where the current main entrance is located.**

GATHERING SPACE

Newly designed possibility for an enlarged Gathering Space in the current main entrance area. Note that the Blessed Sacrament Chapel has been moved to the opposite side of the space from where it is currently located. This will give the chapel better proximity and visibility to the worship space. Fr. Ed's office has been removed in this rendering and is located next to the current main office (which in this drawing is designed smaller.)



BLESSED SACRAMENT CHAPEL



Very preliminary design for the possible INTERIOR of the Blessed Sacrament Chapel.

WORSHIP SPACE INTERIOR

This shows the complete preliminary possibility for outside entrances, gathering space, Offices, Blessed Sacrament Chapel and the Worship space. This design for the worship space provides both opportunity and challenges, which must thoroughly be discussed and reflected upon.

Note that in this design the Altar is in the center with all in the assembly surrounding it. Note the deliberate “cruciform” design in the flooring (which is also reflected in the ceiling/lighting design (seen on succeeding pages)).

Also note that the Font is retained in its current location.



POSSIBLE INTERIOR OF CURRENT WORSHIP SPACE



Possible preliminary design for the INTERIOR of the current worship space. Note that in this design the altar is located in the center of the space with the assembly surrounding it. The Ambo and Cross are located on what is now “the back wall.”

NOTE THE DESIGN FOR THE *PRELIMINARY POSSIBILITY* FOR LIGHTING AND CEILING.

The “lighting structure” is designed in such a way as to allow the altar, in this design, to be visibly central, providing a “more level or even” appearance of the ceiling. The upper portions—“the beams” will continue to be visible, but will be unlighted.

Note the additional door provided for entrance into the worship space from the social center and from worship space into social center.

The moveable wall into the social center is retained in this design.

PROPOSED “VIEW” OF CURRENT ALTAR AREA.



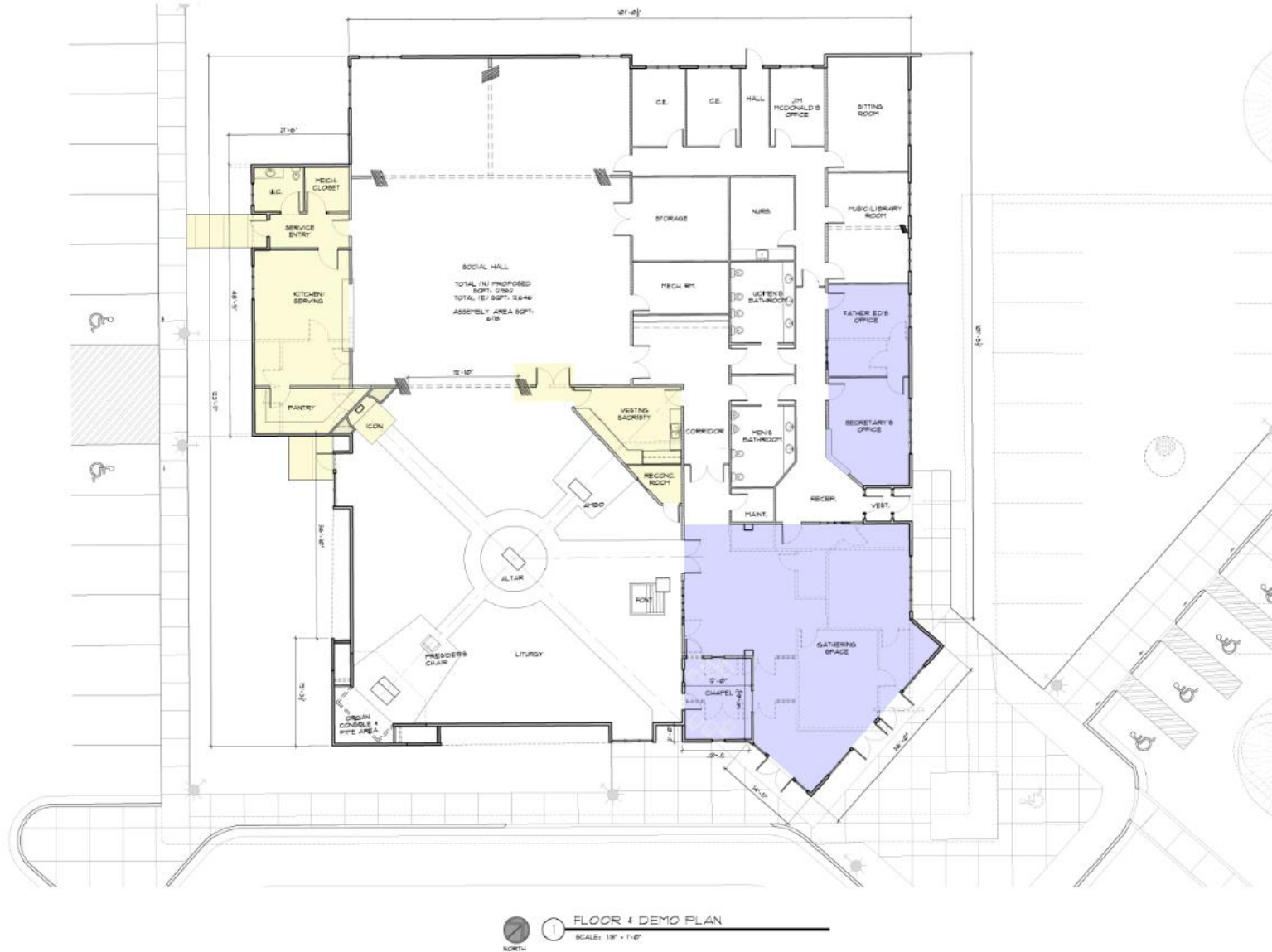
This view is where the altar is currently located. Note the suggested location of the icon of the Blessed Trinity, which in this design, is the focus of this space. On either side of the Icon is a proposed location for the Organ pipes/cabinet. The organ console, has been placed under the icon, the piano to the right. The chair in front of the organ console is the “presider’s Chair.”

PRELIMINARY PROPOSAL: SHRINE FOR MARY



The Image of Mary (in this suggestion, an Icon) is located in this preliminary design where the current West entrance is located. That entrance in this proposal is eliminated.

PROPOSED SITE PLAN

[illegible]

BLESSED TRINITY CHURCH

1475 EATON ST

MISSOULA

MONTANA



125 1/2 W. Main
Missoula MT 59802
tel: 406.549.6120
fx: 406.549.4079
web: www.persdgm2.com
email: persdgm1@aol.com

[illegible]

SEPT 23, 2016

FLOOR &
DEMO PLAN

A2.0

Prelim.